

Energy Wholesale Market Review

Week Ending 10th May 2013



EDW House, Radian Court, Knowlhill, Milton Keynes, MK5 8PJ.

Phone: +44 (0)8448 802 489
Email: info@edwtech.com
Website: edwtech.com



Contents

Baseload electricity.....	3
Peak electricity.....	3
Seasonal power prices.....	4
Supplier hedging strategies	4
Wholesale price snapshot	5



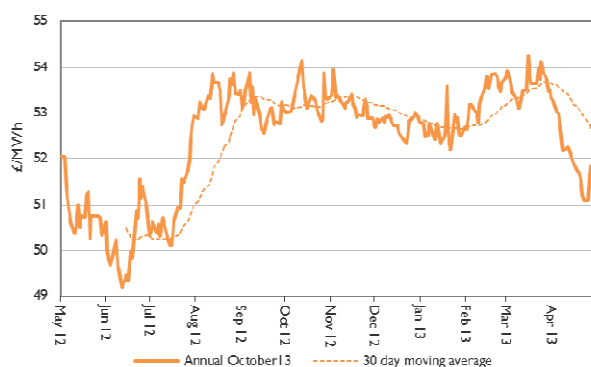
Headlines

Annual power prices fell to eight-month lows last week, but this week saw prices recover slightly following an increase in carbon, gas and oil. Annual power rose 0.8% to £51.5/MWh and annual gas climbed 0.2% to 66.9p/th. The annual baseload power price is now 1% lower than the May 2012 average and 3% lower than the 2012 average of £52.9/MWh. Gas generation was more profitable this week as the gains in power prices outstripped gas prices, the annual clean spark spread increased 4% to £2.8/MWh. In contrast, the annual clean dark spread decreased as a result of rising carbon. The spread fell 1% to £23.6/MWh. The clean dark spread is now at a £20.8/MWh premium to the clean spark spread. Concerns about tensions in the Middle East affecting oil supplies outweighed worries about low demand this week and the month-ahead Brent crude oil contract rose 1.9% to a weekly average of \$104.1/bl. Carbon prices climbed 13.1% to a weekly average of €3.6/t as EU ministers and the German Chancellor expressed support for the idea of fixing the EU ETS to promote a higher price for carbon.

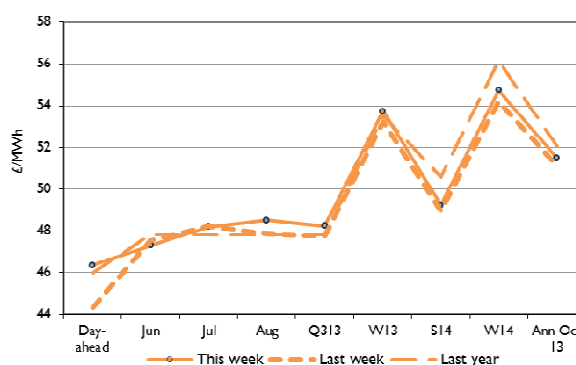
Baseload electricity

- Baseload power prices were driven upwards by rising carbon, gas and oil prices.
- Day-ahead power rose 4.5% to £46.4/MWh, despite high wind output.
- Annual October 13 baseload power climbed 0.8% to £51.5/MWh.
- The contract is now 3.3% lower than last month and 3% lower than the 2012 average.

Annual October contract



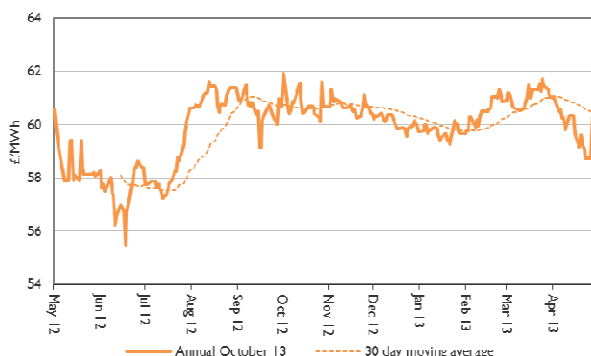
Forward curve comparison



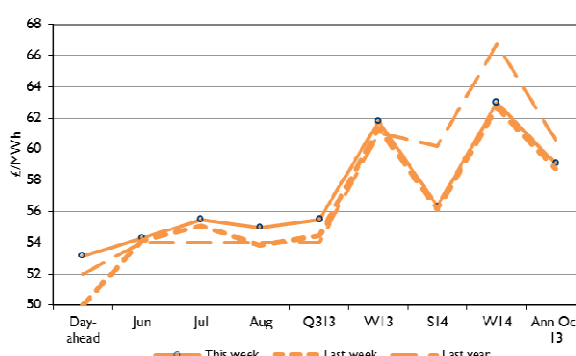
Peak electricity

- Peak power prices rose across the board this week.
- The annual October 2013 peak power contract was up 0.6% to £59.1/MWh.
- Day-ahead peak electricity climbed 6.3% to £3.2/MWh.
- The contract is now 10% lower than last month and 2% higher than last year.

Annual October contract



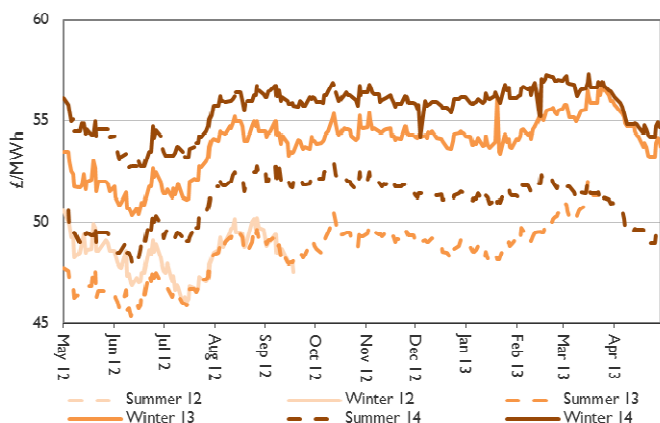
Forward curve comparison





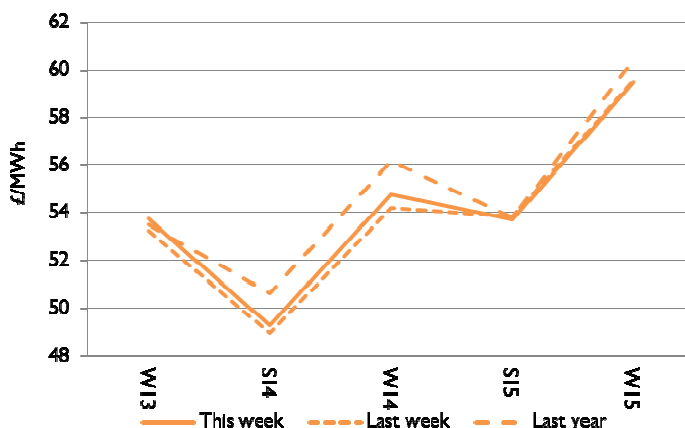
Seasonal power prices

Seasonal power contracts



- Winter power contracts were up 0.6% on average. Winter 13 electricity rose 0.9% to £53.8/MWh.
- On average summer power contracts climbed 0.2%. Summer 14 increased 0.6% to £49.3/MWh.

Seasonal power curve



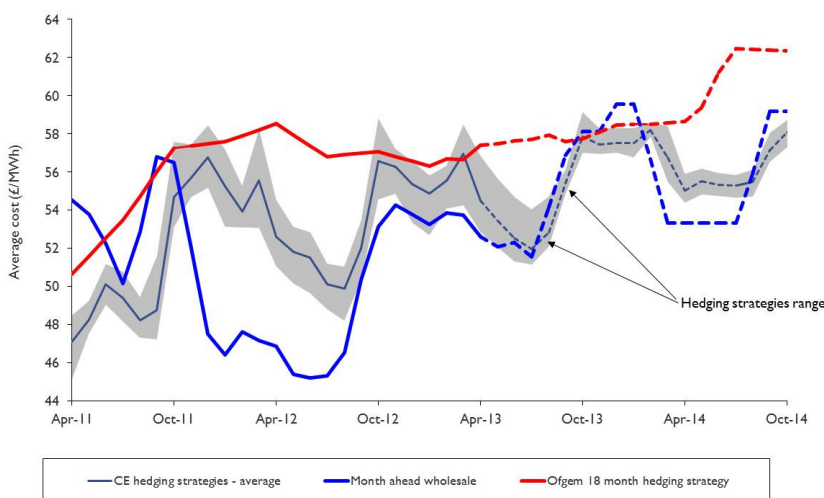
- The winter 13 power contract is now 3.6% lower than last month's level of £55.8/MWh.
- Winter 13 power is now 0.5% above the price in 2012, which was £53.5/MWh.

Supplier hedging strategies

Improving weather and secure supplies have helped UK electricity and gas contracts fall during April. Average month-ahead wholesale power prices for the last four weeks have decreased by 1% compared with the previous month's figures. There has been a decrease in suppliers' cost-based notional hedging strategies, prices are likely to reduce again during the summer, but the fall will not match the large drop seen in summer 2012. It is therefore unlikely there will be a price reduction before next winter. Electricity prices for this winter are expected to be 2% higher than last year. The Department of Energy and Climate Change (DECC) released its estimates of the impact of policies on consumer bills. DECC said its policies have reduced gas and power bills by 5% and by 2020 bills will have been reduced by 11%.

Although both Ofgem's and our assessments show a similar overall trend, the incorporation of nearer-term prices makes our assessments more volatile than Ofgem's smoothed quarterly and seasonally based approach.

Electricity





Wholesale price snapshot

Key market indicators:

10/05/2013

	Gas (p/th)		Electricity (£/MWh)		Wood Pellets (€/t)		Coal	Carbon	Brent crude
	Day-ahead	Year-ahead	Day-ahead	Year-ahead	Month-ahead	Year-ahead	(\$/t)	(€/t)	(\$/bl)
This week 10 May 13	63.85	66.93	46.35	51.50	110.09	116.63	92.35	3.80	104.20
Last week 3 May 13	63.75	66.80	44.35	51.10	111.42	116.44	92.25	3.18	102.86
Last month 12 Apr 13	68.00	68.78	51.40	53.28	111.14	118.18	94.00	4.25	104.11
Last year 11 May 12	59.00	64.38	46.00	52.05	102.15	110.44	105.30	6.58	111.54
Year-on-year % change	8%	4%	1%	(1%)	8%	5.6%	(12%)	(42%)	(7%)
Year high	118.00	71.15	86.00	54.25	114.02	111.85	105.30	9.05	118.81
Year low	52.00	60.45	39.95	47.93	80.68	107.74	90.10	2.70	89.14
This table shows the price this week compared with prices from the previous week, month and year. The graphs show the position of this week's prices with a red X and the range of prices over the year is represented by the black line.	120	72	88	54	116.0	119	110	10	120
	115		84		112.0			9	116
	110		80	53	108.0	117		8	112
	105		76	52	104.0	115		7	108
	100		72	51	100.0	113		6	104
	95	68	68	50	96.0	111		5	100
	90	66	64	49	92.0	109		4	96
	85	64	60	48	88.0	107		3	92
	80	62	56	47	84.0			2	88
	75	60	52		80.0				



About EDW Technology Limited

EDW has an extensive history of developing, implementing and supporting its 'best of breed' retail electricity software solutions.

In 2000, EDW began building a revolutionary new electricity software platform to support the rigorous demands of the UK's deregulated electricity supply market – a market characterised by rapidly changing government regulation, business processes, market rules, industry dataflows and customer demands. EDW were founded as a provider of high quality, end-to-end IT services and we have remained true to that aim ever since, servicing a range of companies in the energy industry.

For over 12 years, our software product ERS has empowered business electricity suppliers to transform customer experience, improve business efficiency, reduce costs to serve and improve profitability.

EDW has a UK based team of 75 employees working from the EDW offices in Milton Keynes.

Industrial and commercial billing specialists

The industrial and commercial electricity supply market has unique business requirements that need to be serviced with a specialised set of IT system capabilities. Sophisticated business customers are willing to actively engage in the management of their energy accounts and solutions need to provide tools that support enhanced service interaction. EDW has gathered an extensive knowledge of the industrial and commercial market sector that enables the delivery of a powerful set of system capabilities essential to your requirements to service this complex and demanding market sector.

EDW Technology Limited

EDW House

Radian Court

Knowlhill

Milton Keynes

MK5 8PJ

UK

Tel: +44 (0) 8448 802 489

Fax: +44 (0) 8448 802 487

Website: www.edwtech.com

Copyright © 2013 EDW Technology Limited. All rights reserved.

No part of this publication may be reproduced, transmitted, transcribed, stored in a retrieval system, or translated into any language, in any form or by any means, electronic, mechanical, photocopying, recording, or otherwise, without prior written permission from EDW Technology Limited.

All copyright, confidential information, patents, design rights and all other intellectual property rights of whatsoever nature contained herein are and shall remain the sole and exclusive property of EDW Technology Limited. The information furnished herein is believed to be accurate and reliable. However, no responsibility is assumed by EDW Technology Limited for its use, or for any infringements of patents or other rights of third parties resulting from its use.